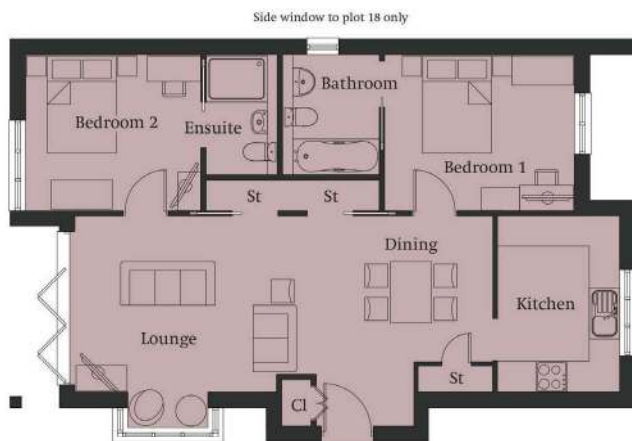


The Highworth



Room	Metric	Imperial
Living/Dining Room	8.4m x 4.2m max	27.5ft x 13.7ft
Kitchen area	3.6m x 2.5m	11.8ft x 8.2ft
Bedroom 1	3.6m x 3.0m	11.8ft x 9.8ft
Bedroom 2	3.6m x 3.0m	11.8ft x 9.8ft
Total area: approx 78.69 sq metres (844 sq ft)		

Plots: 3, 5, 14, 17, 18, 21, 26, 27, 34, 42

Floorplans and dimensions are taken from architectural drawings and could vary during construction and are provided for guidance only. Floorplans are not to scale.



KINGSDOWN

Retirement Village

kingsdownretirementvillage.com